



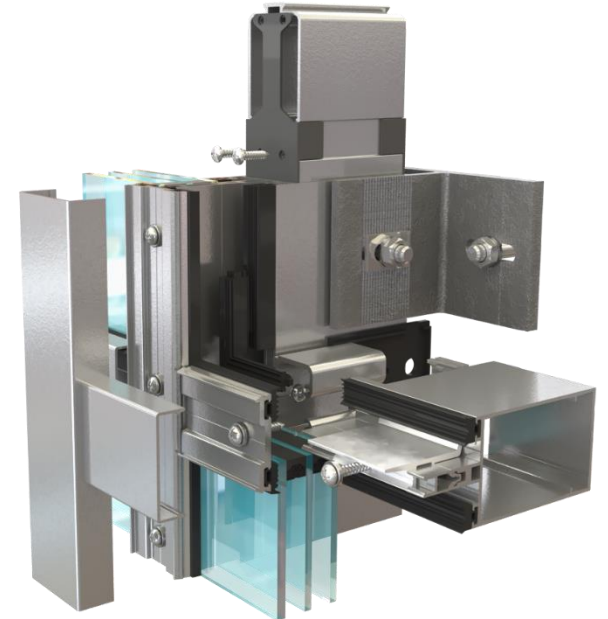
SINCE 2008



# NUR ARCH

## FACADE SYSTEM

[WWW.NURARCH.COM](http://WWW.NURARCH.COM)





# A bout us

When we started this business in 2008 we were still looking to develop and provide the best to our customers, by finding all the solutions available in the work of gladding and curtain wall. The content of our work is to design and present proposals for the packaging of building facades of all materials: glass- marble - aluminum - wood - ceramic, and the work is within a structure that connects mechanically by sections and accessories made of steel, and aluminum that we manufacture. We have installed more than one million square meters of all the materials we work in. It is possible to receive a project and start the necessary designs and calculate the required materials and process and send them to the sites and we are ready to provide all services from installation, processing and design of any work related to the design of the facades of the buildings. We are always looking forward through the vision of Engineer Fadhil, who started this work, to constantly develop and keep up with the world with all the new. Ready to operate all over the world: as Turkey and Istanbul are a commercial center for the whole world.

2008 yılında bu işe başladığımızda, arayüz oluşturma çalışmalarında mevcut olan tüm çözümleri bularak, müşterilerimize en iyi çözümleri sunmaya ve geliştirmeye çalışıyoruz. Çalışmalarımızın içeriği, cam- mermer - alüminyum - ahşap - seramik gibi tüm malzemelerin bina cephelerinin ambalajlanması için öneriler tasarlamak ve sunmaktır ve iş, ürettiğimiz çelik, çelik ve alüminyumdan yapılmış kesit ler ve aksesuarlarla mekanik olarak bağlanan bir yapı içindedir. Çalıştığımız tüm malzemelerin bir milyon metre kareden fazlasını kurduk. Bir proje almak ve gerekli tasarımları başlatmak ve gerekli malzeme ve süreci hesaplamak ve şantiyelere göndermek mümkündür ve biz montaj, işleme ve binaların cephelerinin tasarımı ile ilgili herhangi bir iş tasarımı tüm hizmetleri vermeye hazırız. Bu çalışmayı başlatan Mühendis Fadhil'in, tüm yenileriyle dünyayı sürekli geliştirmek ve ayak uydurmak vizyonunu her zaman dört gözle bekliyoruz. Türkiye ve İstanbul olarak tüm dünyada faaliyet göstermeye hazır olmak tüm dünya için bir ticaret merkezidir.

عندما بدأنا هذا العمل في عام 2008 كنا ومازلنا نتطلع الى التطوير وتقديم افضل ما لدينا الى زبائننا الكرام , وذلك من خلال ايجاد جميع الحلول المتوفرة في اعمال اكساء الواجهات. مضمون عملنا هو ان نقوم بتصميم وتقديم مقترحات لتغليف واجهات البنايات من كافة المواد : الزجاج – الرخام – الالمنيوم – الخشب – السيراميك , ويكون العمل ضمن هيكل يربط ميكانيكيا بواسطة مقاطع واكسسوارات مصنوعة من الفولاذ والستل ستيل والالمنيوم التي نقوم بتصنيعها. قمنا بتركيب اكثر من مليون متر مربع من جميع المواد التي نعمل بها. من الممكن ان نقوم باستلام مشروع والبدء بالتصاميم اللازمة وحساب المواد المطلوبة وتجهيزها وارسالها الى المواقع ونحن مستعدون لتقديم جميع الخدمات من تركيب وتجهيز وتصميم اي عمل متعلق باكساء واجهات البنايات. ونحن نتطلع دوما من خلال رؤية المهندس فاضل والذي بدء بهذا العمل , الى التطور الدائم ومواكبة العالم بكل جديد. مستعدون للعمل في جميع انحاء العالم حيث تعتبر تركيا ومدينة اسطنبول مركزا تجاريا عالميا.



# CERTIFICATE

VERGİ LEVHASI			 Gelir İdaresi Başkanlığı
MÜKELLEFİN			
ADI SOYADI		VERGİ DAİRESİ	AVCILAR
TİCARET ÜNVANI	NUR ARCH İNŞAAT SANAYİ DİŞ TİCARET LİMİTED ŞİRKETİ.	VERGİ KİMLİK NO	 3 8 8 1 4 1 4 8 1 6
İŞ YERİ ADRESİ	TURGUT ÖZAL MAH. 68. SK. ENGIN GROUP NO: 28 İÇ KAPI NO: 15 ESENYURT/ İSTANBUL	TC KİMLİK NO	
VERGİ TÜRÜ	KURUMLAR VERGİSİ	İŞE BAŞLAMA TARİHİ	12.06.2020
FAALİYET KOD VE ADLARI	412002-İKAMET AMAÇLI BİNALARIN İNŞAATI (MÜSTAKİL KONUTLAR, BİRDEN ÇOK AİLENİN OTURDUĞU BİNALAR, GÖKDELENLER VB.NİN İNŞAATI) (AHŞAP BİNALARIN İNŞAATI HARİÇ)		
TAKVİM YILI	BEYAN OLUNAN MATRAH	TAHAKKUK EDEN VERGİ	ONAY KODU
2019	Yeni işe başlama	12.06.2020	 G 3 P X 8 1 7 Y 3 N 1

<https://ivd.gib.gov.tr> adresinden güncelliğini ve doğruluğunu sorgulayabilirsiniz.



NUR ARCH



# CONTENTS

- » **01** SERVICES
- » **02** PROJECTS
- » **03** SUSTAINABILITY
- » **04** CONTACT US



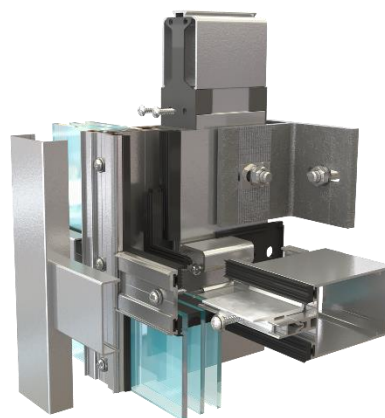


# SERVICES

CURTAIN WALL



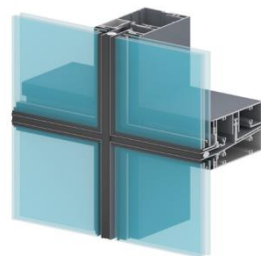
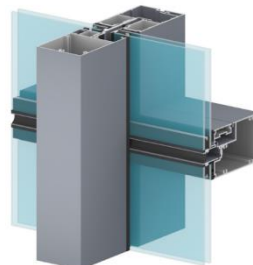
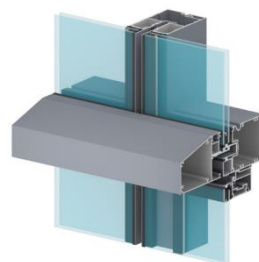
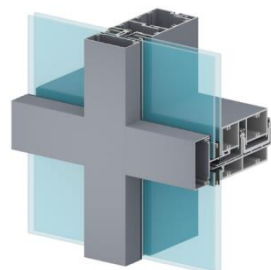
NUR ARCH



## CURTAIN WALL

### Product Features

- Material: aluminum
- Finish: powder coated or PVDF
- 110~250mm system depths
- 50 mm width / 50 mm ~ 300 mm length
- 5 mm U bracket galvanized
- Glazing: 10-45 mm single or double or triple
- Field glazed
- U-Value: 1.1w(m<sup>2</sup>k)
- Solar factor: 15%~35%
- U-Factor: 1.6~4.0
- Excellent wind load resistance performance/water-tightness performance/air permeability performance
- Life Cycle : 30 Years



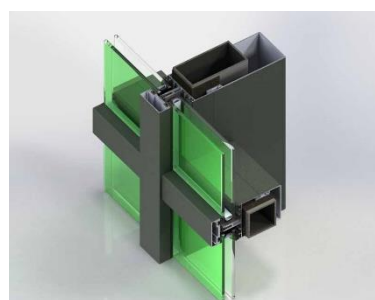
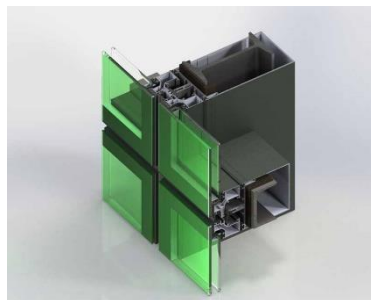
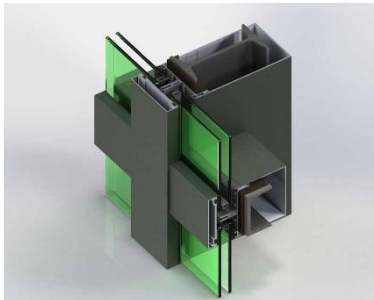


# SERVICES

SKYLIGHT



NUR ARCH



## SKYLIGHT

### Product Features

- Material: aluminum
- Finish: powder coated or PVDF
- 110~240mm system depths
- Capped/semi-capped/non-capped available
- Glazing: 10-32 mm
- Excellent wind load resistance performance/water-tightness performance/air permeability performance
- U-Factor:1.6~4.0
- Accommodates various windows and doors
- Faster installation, reduced field labor
- Life Cycle : 30 Years





# SERVICES

Spider glass



NUR ARCH



## Spider glass Product Features

- Material: stainless steel 304
- Finish: powder coated or PVDF
- 110~240mm system depths
- Capped/semi-capped/non-capped available
- Glazing: 10 -32 mm
- Excellent wind load resistance performance/water-tightness performance/air permeability performance
- Accommodates various doors
- Faster installation, reduced field labor
- Life Cycle : 30 Years







# SERVICES

CLADDING



CLADDING

Product Features



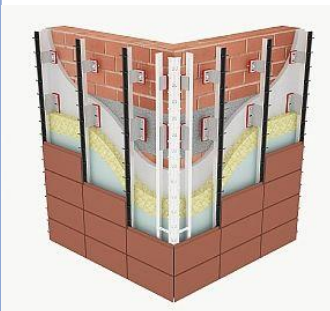
NUR ARCH



Frontek  
فرونتك



CENTERFLIX  
ستترفلكس



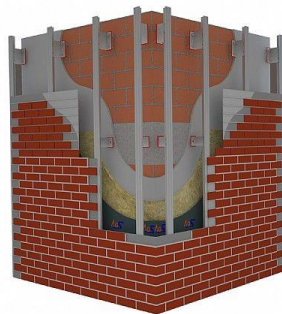
Terracotta  
تيراكوتا



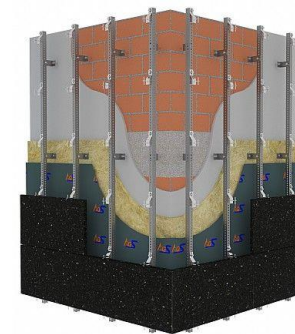
PORCELAIN  
بورسلين ميكانيكي



Compact HPL  
خشب كومباكت



BRICK  
طابوق ميكانيكي



MARBLE  
مرمر ميكانيكي

- Structure Material: Aluminum T profile
- Bracket L shap galvanized
- Rock wool : 50 mm / 48 kg / m2
- Part connection made by stales steel 304
- Excellent wind load resistance  
performance/water-tightness  
performance/air permeability performance
- Warranty: 10 Year Limited Warranty





# SERVICES

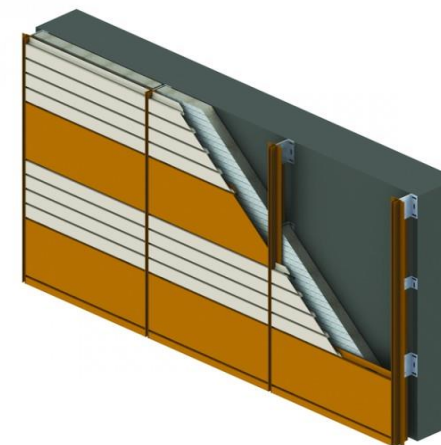
CLADDING COTTA ALUMINUM



CLADDING TO OIL STATION  
**Product Features**



NUR ARCH



- Structure Material: Galvanized
- The Material :Aluminum
- Finish: powder coated or PVDF
- Bracket L shap galvanized
- The main structure is steel
- The Material size :100mm – 300 mm
- The Material thickness : 2mm
- Excellent wind load resistance  
performance/water-tightness  
performance/air permeability performance
- Warranty: 10 Year Limited Warranty

WWW.NURARCH.COM

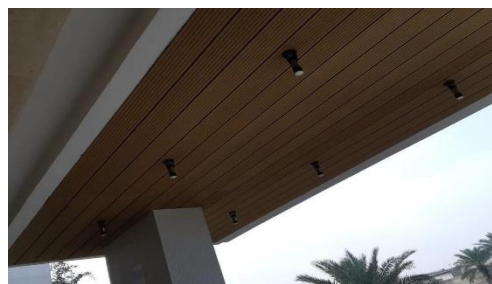
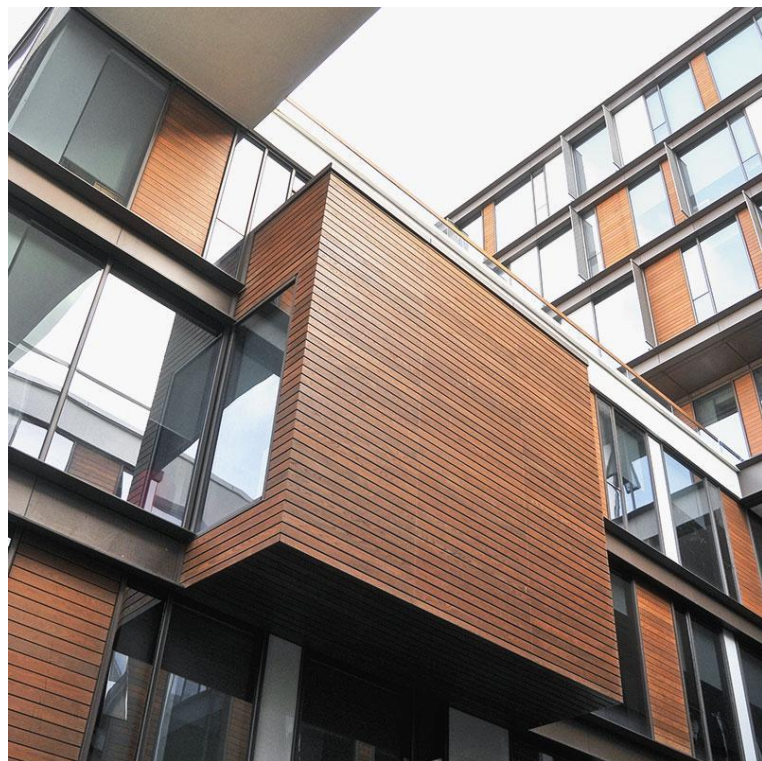






# SERVICES

WOOD CLADDING



## WOOD & WPC CLADDING Product Features



NUR ARCH



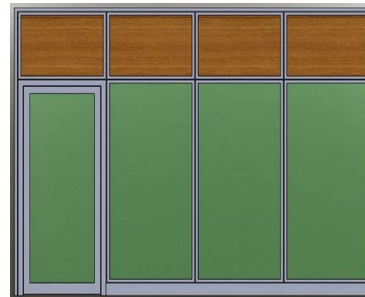
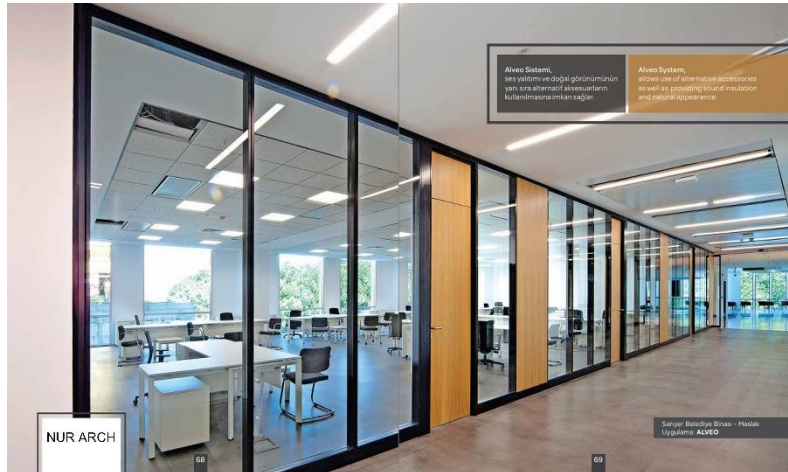
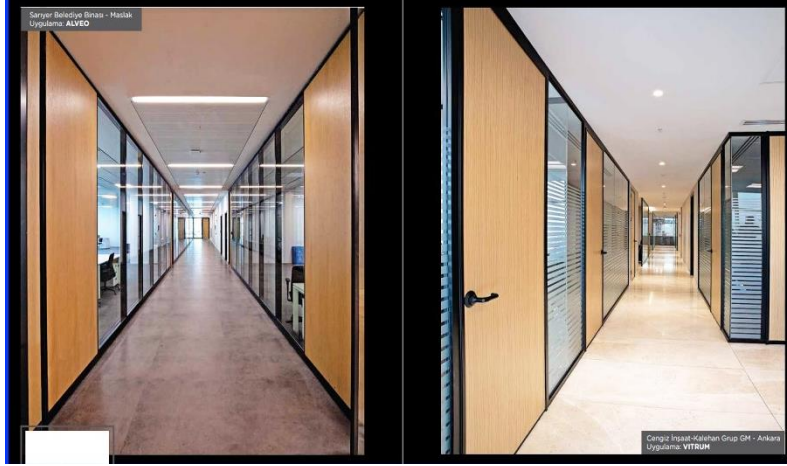
- Structure Material: Aluminum T profile
- Bracket L shap galvanized
- Rock wool : 50 mm / 48 kg / m2
- Part connection made by stales steel 304
- Excellent wind load resistance  
performance/water-tightness  
performance/air permeability performance
- Warranty: 10 Year Limited Warranty



# SERVICES

## OFFICE PARTITION

### "EUROPEAN-STYLE"



## OFFICE PARTITION Product Features

- Material: aluminum
- Finish: powder coated or PVDF
- 50mm system depths/50mm sightline
- Infill: 5-24mm
- Field glazed or Wood
- Excellent wind load resistance performance/water-tightness performance/air permeability performance
- Life Cycle(sash) :10000 Cycles
- Screen available
- Hardware: Equipped with heavy duty stainless steel four-bar hinge allowing a 75 degree opening of sash
- Warranty: 10 Year Limited Warranty





# SERVICES

AUTOMATIC DESIGN Tent & Glass



## AUTOMATIC DESIGN

- Material: aluminum
- Finish: powder coated or PVDF
- 50~150mm system depth(frame)
- Control by remote
- Field glazed or shop aluminum or Canvas
- Excellent wind load resistance performance/water-tightness performance/air permeability performance
- Motor : Becker or somfy
- Life Cycle(sash) :at least 100000 Cycles
- An ideal way to have easy access to the garden, terrace, patio or covered relaxation area
- Warranty: 10 Year Limited Warranty

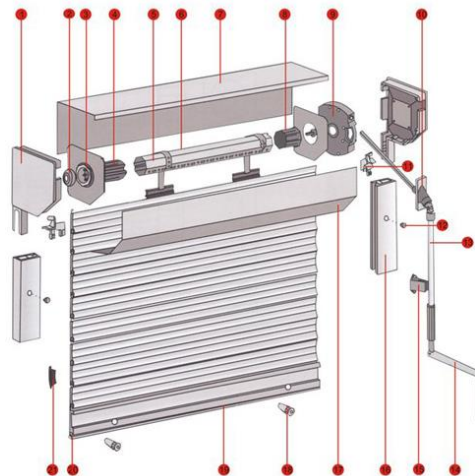






# SERVICES

## AUTOMATIC DOOR DESIGN



## AUTOMATIC DESIGN

- Material: aluminum
- Finish: powder coated or PVDF
- 50~100mm system depth(frame)
- Control by remote
- Field glazed or shop aluminum
- Excellent wind load resistance performance/water-tightness performance/air permeability performance
- Motor : Becker or somfy or panasung
- Life Cycle(sash) :at least 100000 Cycles
- An ideal way to have easy access to the garden, terrace, patio or covered relaxation area
- Warranty: 10 Year Limited Warranty





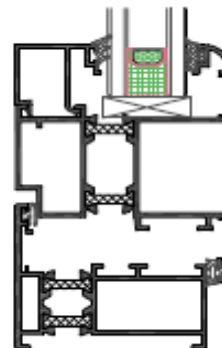
# SERVICES

THERMAL BREAK WINDOW



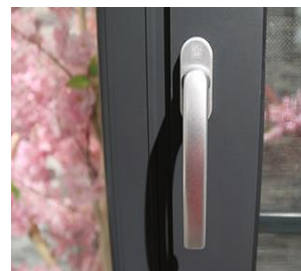
NUR ARCH

## "EUROPEAN-STYLE"



## THERMAL BREAK WINDOW Product Features

- Material: aluminum
- Finish: powder coated or PVDF
- 50mm system depths/50mm sightline
- Infill: 5-24mm
- Field glazed or shop glazed
- Excellent wind load resistance performance/water-tightness performance/air permeability performance
- U-Factor:2.1~4.0
- Life Cycle(sash) :10000 Cycles
- Screen available
- Hardware: Equipped with heavy duty stainless steel four-bar hinge allowing a 75 degree opening of sash
- Warranty: 10 Year Limited Warranty





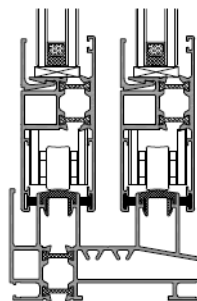
# SERVICES

## THERMAL BREAK SERIES



NUR ARCH

**"BREATH EASY WITH  
ZERO SIGHTLINE VENT"**



## THERMAL BREAK SERIES Product Features

- Material: aluminum
- Finish: powder coated or PVDF
- 70~95mm system depth
- Infill: 5-24mm
- Field glazed or shop glazed
- Double thermal barrier
- Excellent wind load resistance performance/water-tightness performance/air permeability performance
- U-Factor: 1.6~3.4
- Life Cycle(sash) :at least 10000 Cycles
- Screen available
- Up to 3 track
- allow for full top to bottom ventilation







# SERVICES

## HINGED DOOR



NUR ARCH



## HINGED DOOR

- Material: aluminum
- Finish: powder coated or PVDF
- 50~100mm system depth(frame)
- Infill: 5-24mm
- Double thermal barrier available
- Field glazed or shop glazed
- Excellent wind load resistance performance/water-tightness performance/air permeability performance
- U-Factor:1.6~4.0
- Life Cycle(sash) :at least 100000 Cycles
- An ideal way to have easy access to the garden, terrace, patio or covered relaxation area
- Up to 2.7m tall and 0.9m wide(single door)
- Warranty: 10 Year Limited Warranty





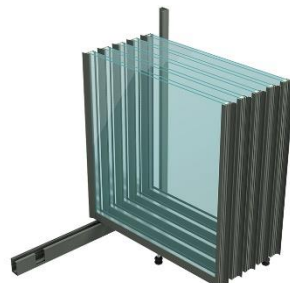


# SERVICES

FOLDING DOOR



NUR ARCH



## FOLDING DOOR

### Product Features

- Material: aluminum
- Finish: powder coated or PVDF
- 50mm system depths
- Infill: 5-24mm
- Field glazed or shop glazed
- Excellent wind load resistance performance/water-tightness performance/air permeability performance
- U-Factor:2.1~4.0
- Life Cycle (sash):at least 100000 Cycles
- Hardware: top hung system allows for easy operation
- Up to 3m tall and 15m wide





# SERVICES

GLASS RAIL



NUR ARCH



## GLASS RAIL

### Product Features

- Material: aluminum
- Finish: powder coated
- Infill: 10-22mm(laminated tempered glass)
- Field glazed
- Excellent wind load resistance
- performance/security performance/ durability performance
- Additional rail available
- Available in multiple different top rail styles
- Fully concealed fixings on face fix applications
- Interior & exterior applications

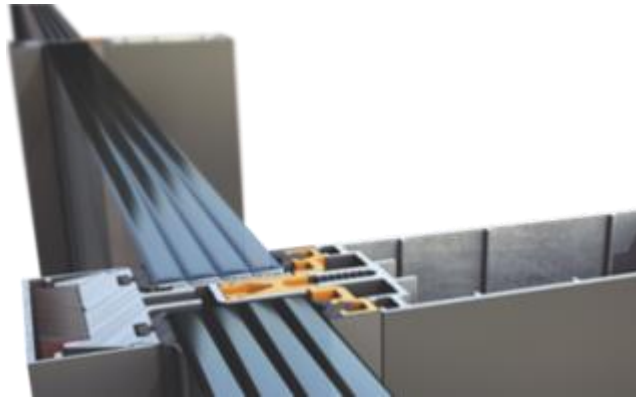






# SERVICES

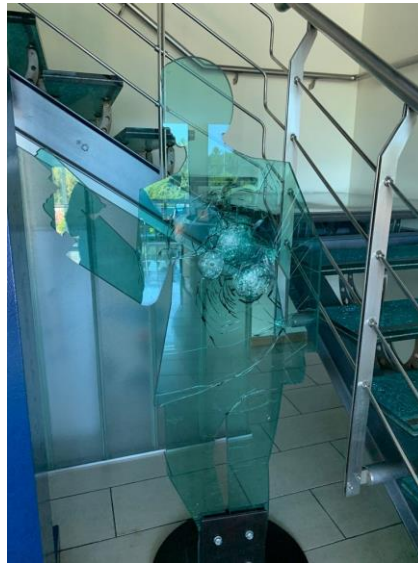
## GLASS ANTI BULLETS



## Glass Anti Bullets

### Product Features

- Material: Glass
- Frame : Aluminum with high thickness
- Infill : 24 -79 mm (laminated glass)
- Infill Total : 250 – 500 mm
- Anti-light and medium weapons and explosions
- Field glazed fixed
- Excellent wind load resistance
- performance/security performance/ durability performance
- Interior & exterior applications





# SERVICES

GRC FAÇADE

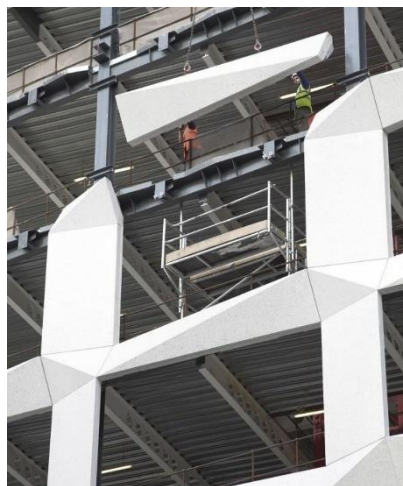
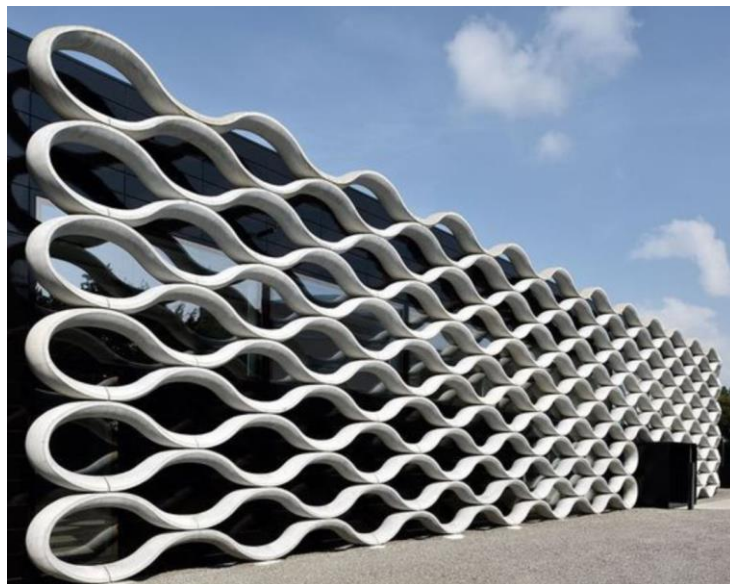


# GRC FAÇADE

## Product Features



NUR ARCH



[WWW.NURARCH.COM](http://WWW.NURARCH.COM)





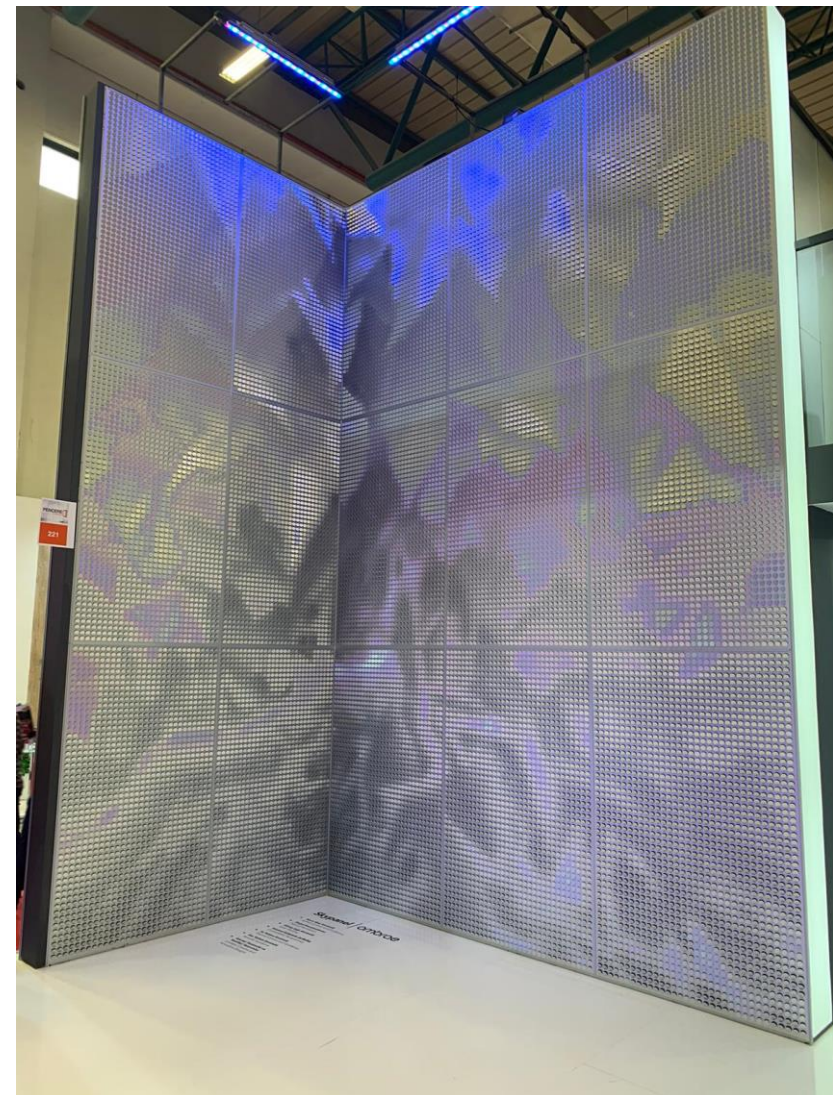
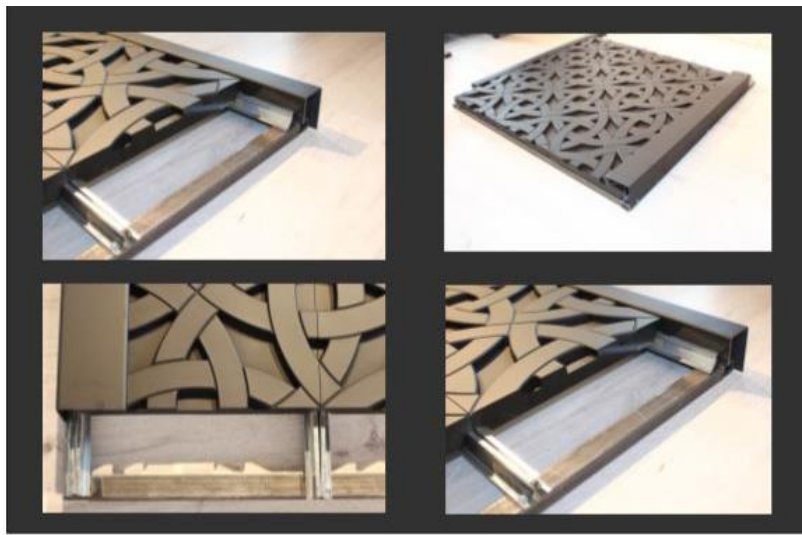
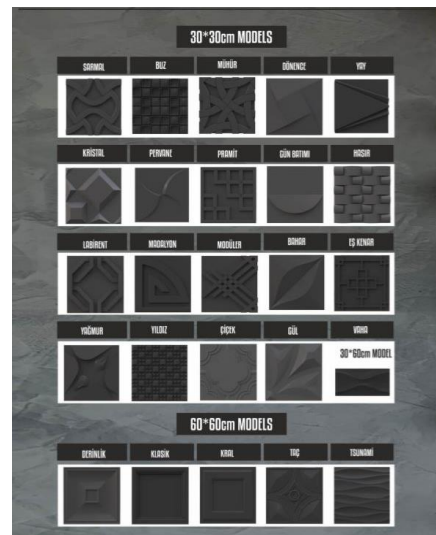


# SERVICES

## Special Façade



NUR ARCH

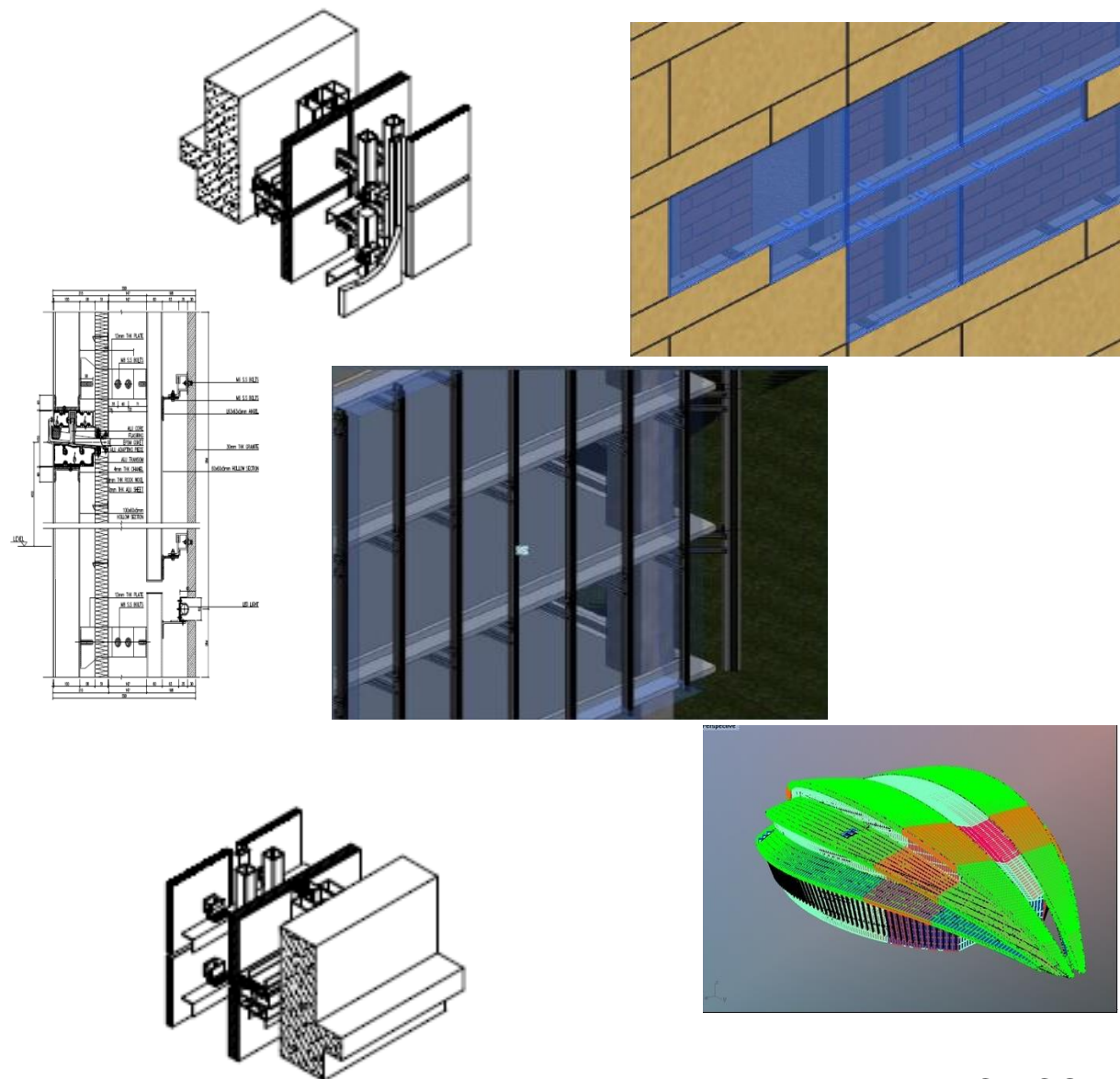






# SERVICES

EXPERTISE TO HELP FULFILL YOUR VISION



WWW.NURARCH.COM

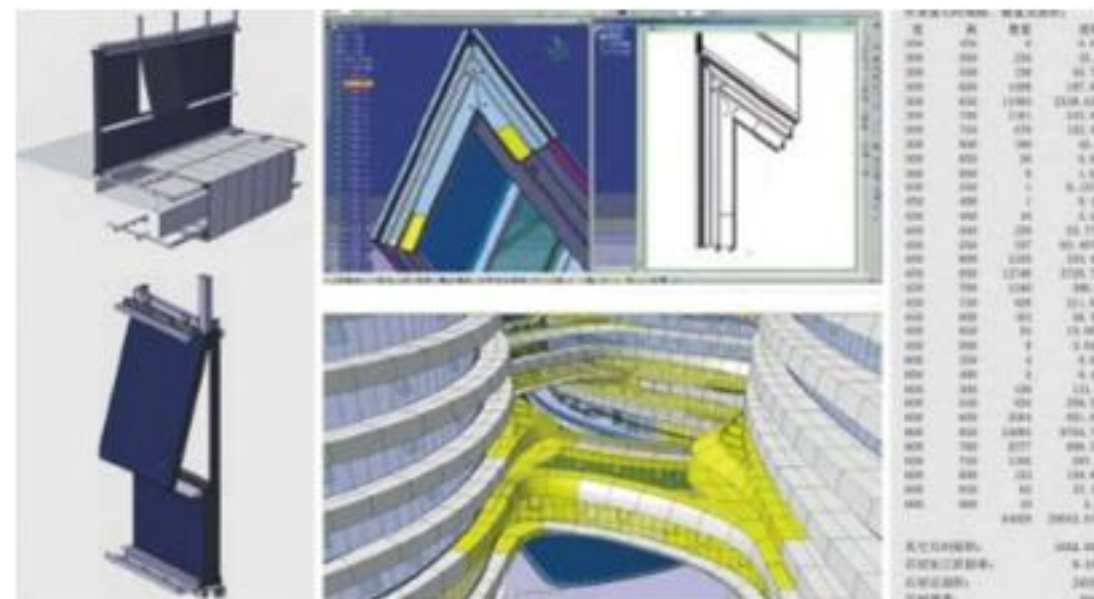


## Glass/Aluminum /Cladding Systems

### DESIGN



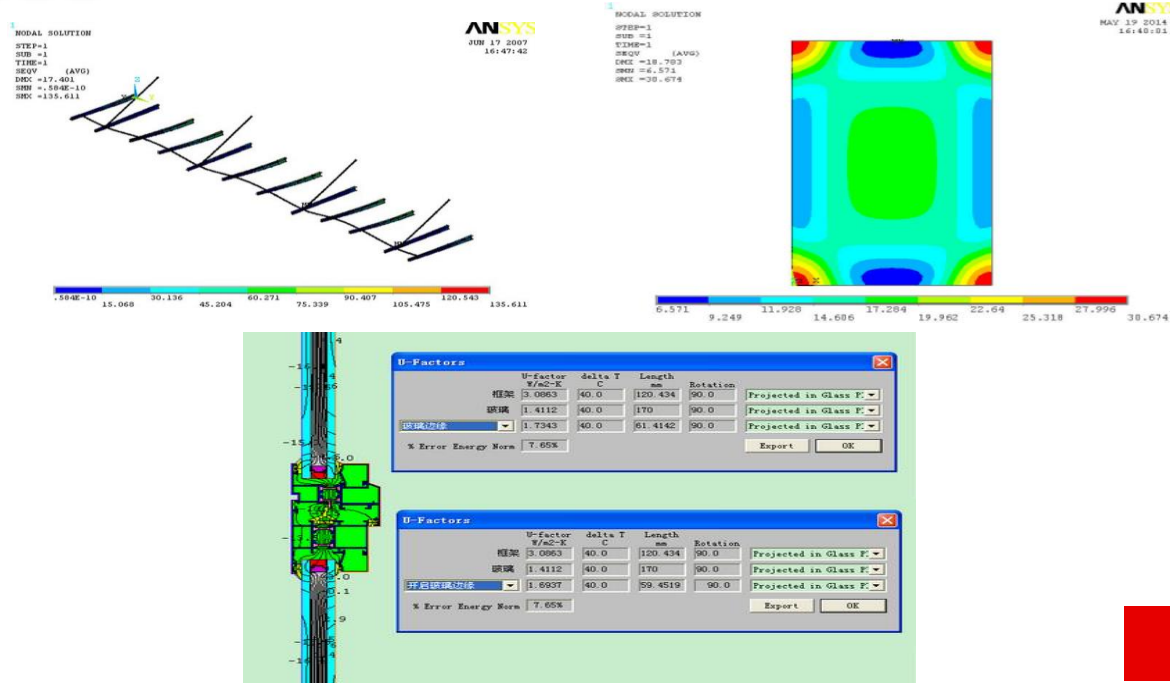
Our experience-based engineer offers design and detailing services to subcontracting and manufacturing firms in the building facade industry, world-wide. You can count on Nur Arch to develop workable details to meet project technical requirements for a wide range of cladding systems that assure excellent performance as well as value for their Clients.





# SERVICES

EXPERTISE TO HELP FULFILL YOUR VISION



Glass/Aluminum /Cladding Systems



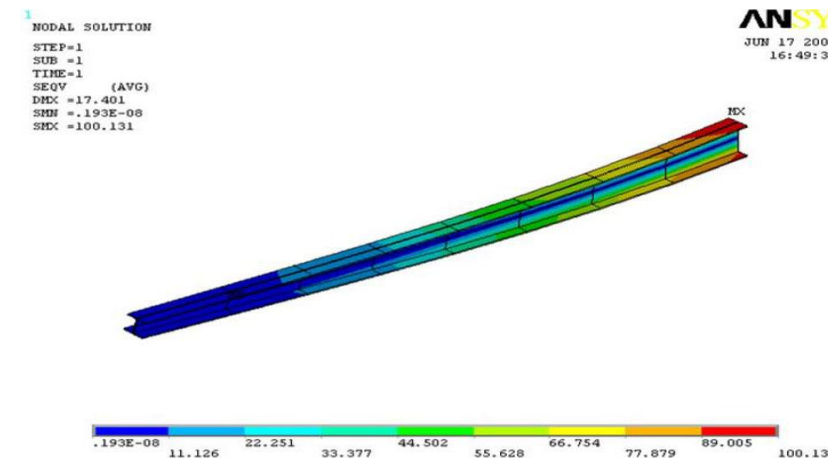
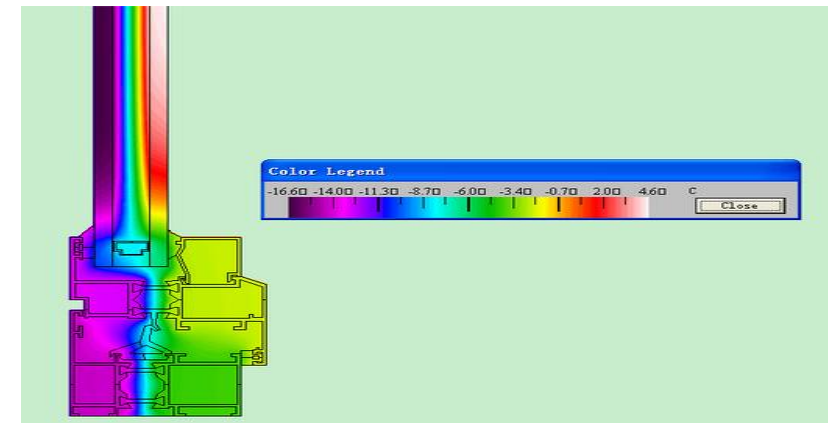
## STRUCTURE ANALYSIS

Nur Arch expert engineers are proficient in analyzing the impact of external forces on static structures. We offer structural analysis services to ensure that these modules meet safety requirements with the help of some software such as SAP2000/ANSYS

WWW.NURARCH.COM



NUR ARCH







# SERVICES

EXPERTISE TO HELP FULFILL YOUR VISION



**Glass/Aluminum /Cladding Systems**

## **ON-SITE TECHNICAL SUPPORT**

Nur Arch stands behind every project we performed, assuring you that each will perform as specified. We offer on-site technical support to assist customers with product application and installation quality.

[WWW.NURARCH.COM](http://WWW.NURARCH.COM)



NUR ARCH

**Glass/Aluminum /Cladding Systems**

## **INSTALLATION**



Here at Nur Arch

we have been installing curtain walls systems for over 10 years with many projects in our Portfolio. Our installation teams are fully accredited and trained to fit a variety of Curtain Wall systems and products. We are working with designers, architects, contractors and building owners in this type of construction all the time.

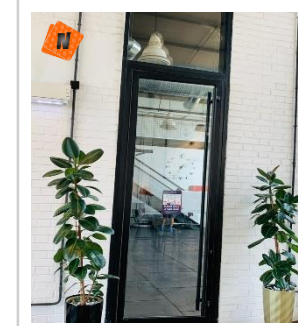
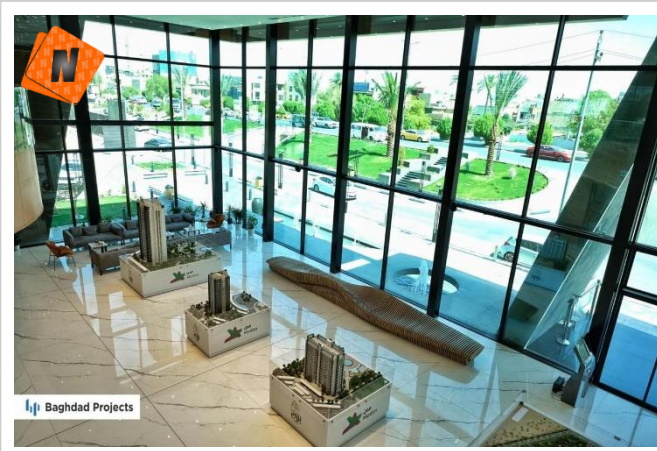
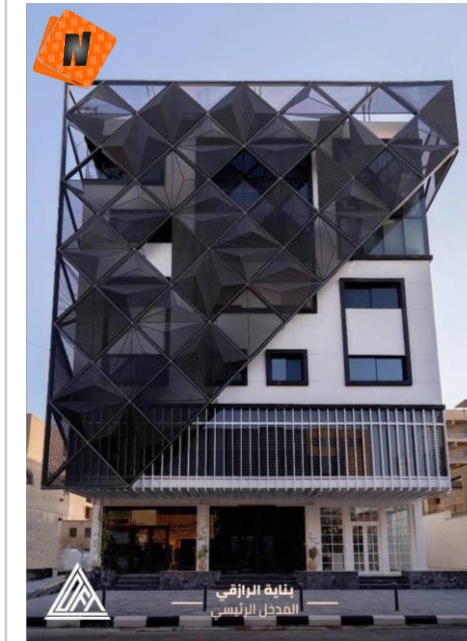






# PROJECTS

DIAMOND LOFT PROJECTS





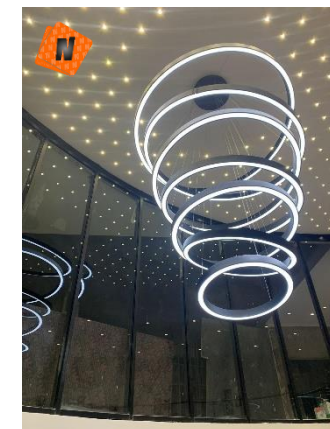
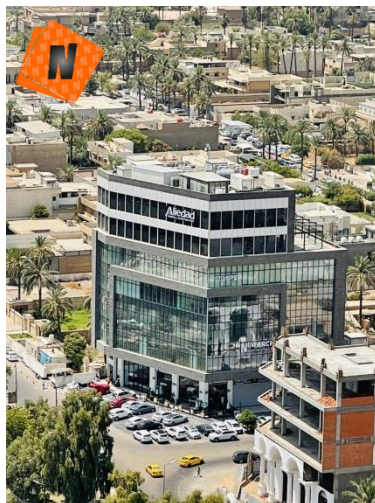


# PROJECTS

AMAAL CO.



NUR ARCH



WWW.NURARCH.COM



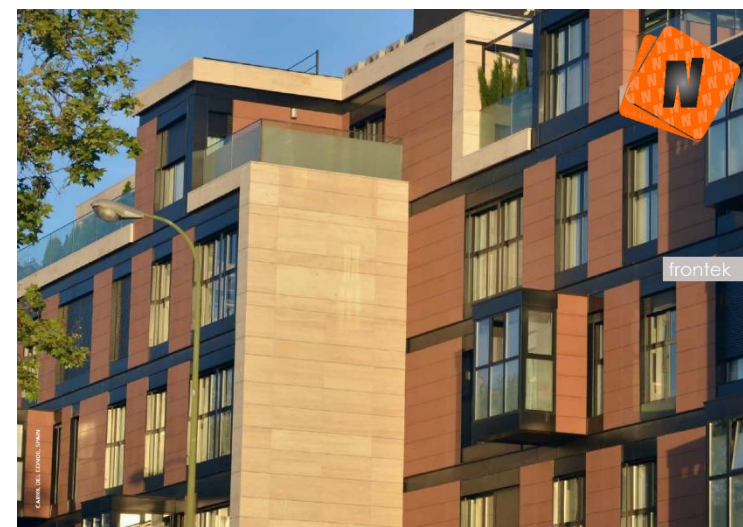


# PROJECTS

HOSPITAL BASRA.



NUR ARCH





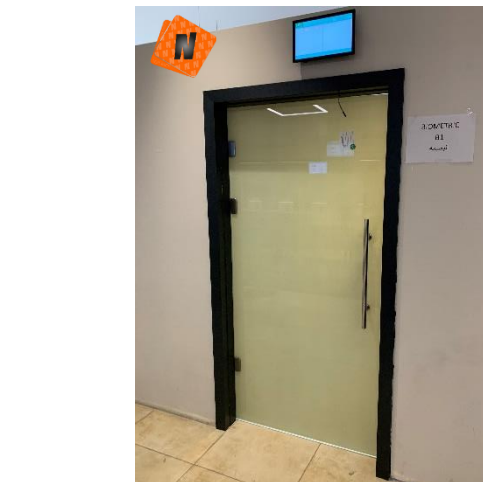


# PROJECTS

TURKIYE VIZA OFFICE



NUR ARCH



WWW.NURARCH.COM

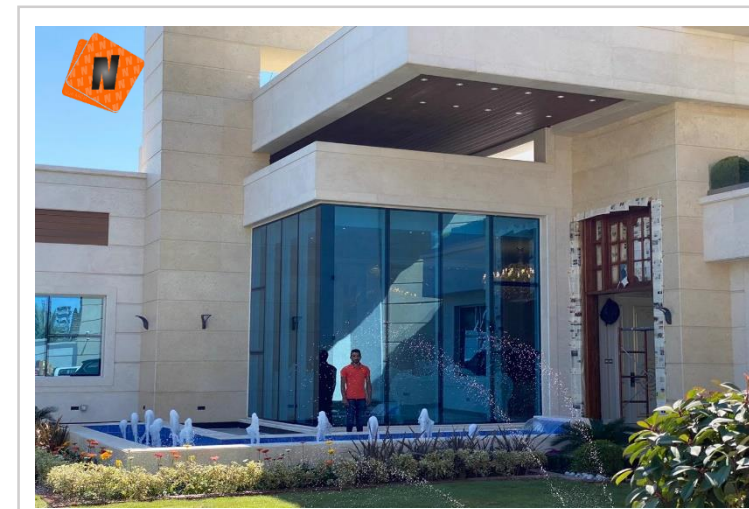
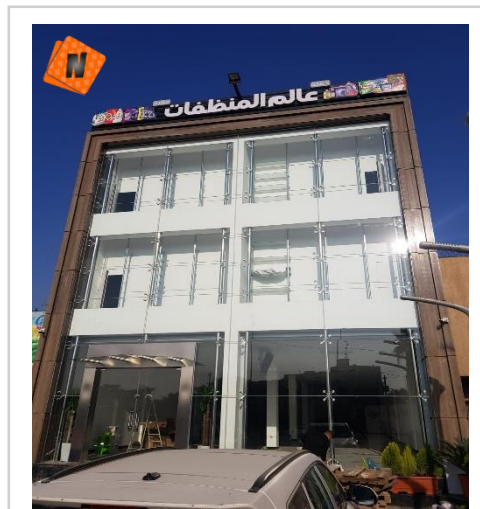
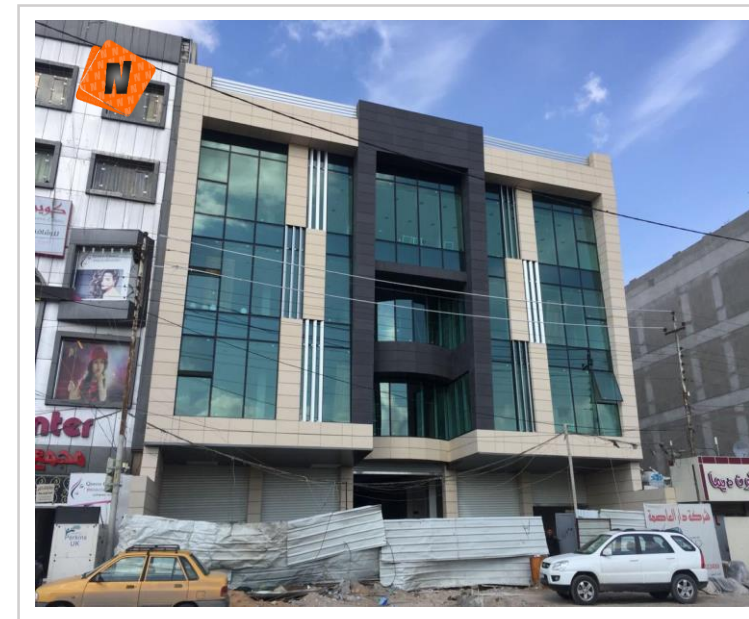
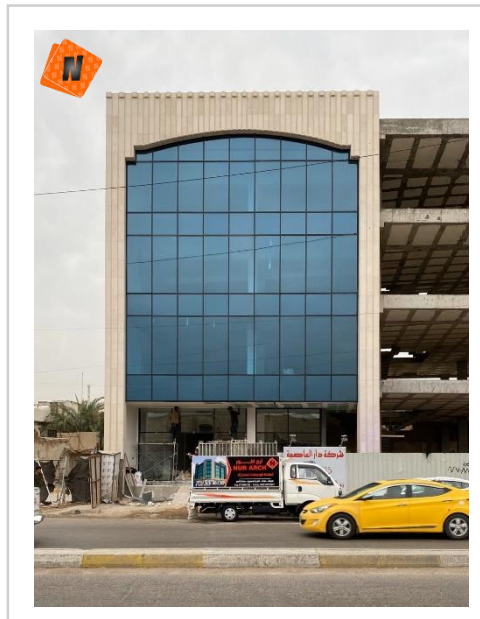






# PROJECTS

DAR ALASEMA CO.

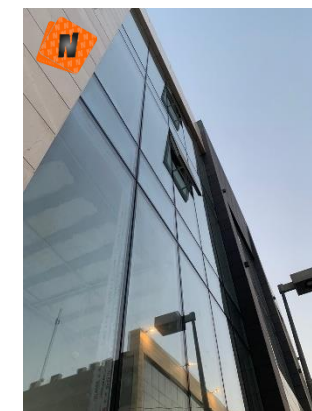
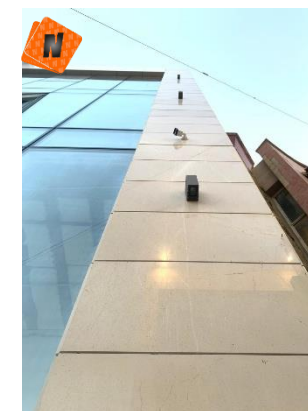
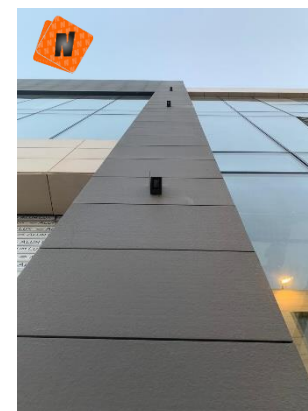
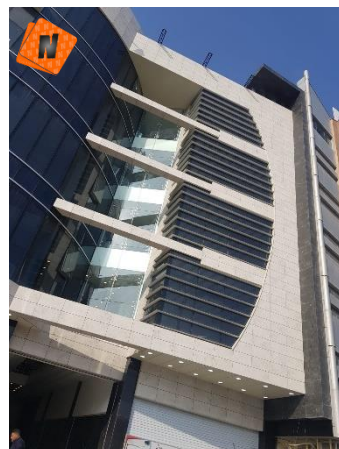
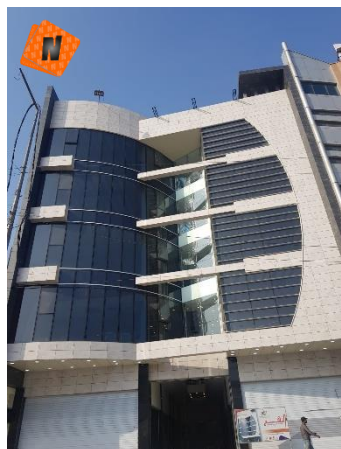
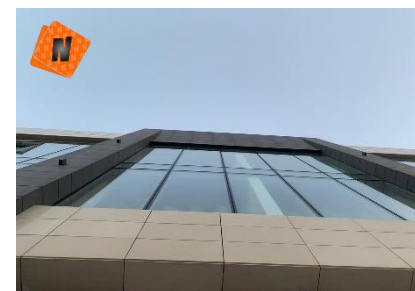






# PROJECTS

ALNAHJ CO.





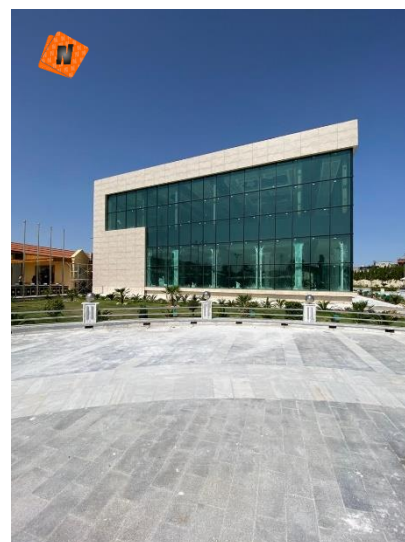


# PROJECTS

TURATH UNEVERCITY



NUR ARCH

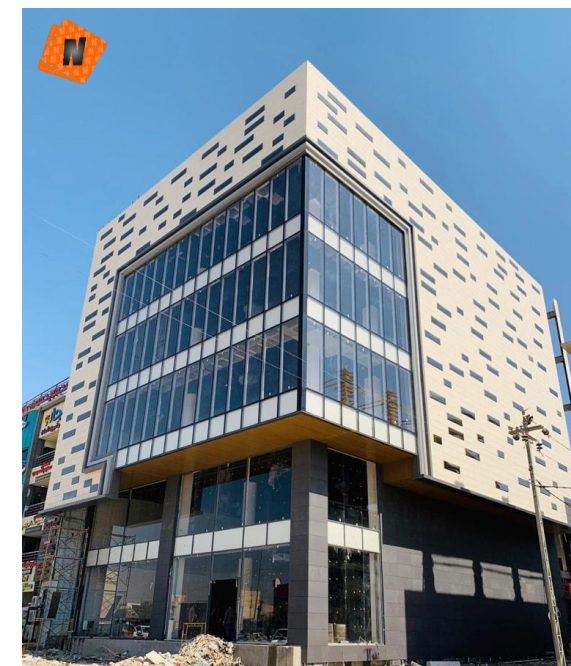






# PROJECTS

ALKASEM MOBILYA







# PROJECTS

KARBALA MALL





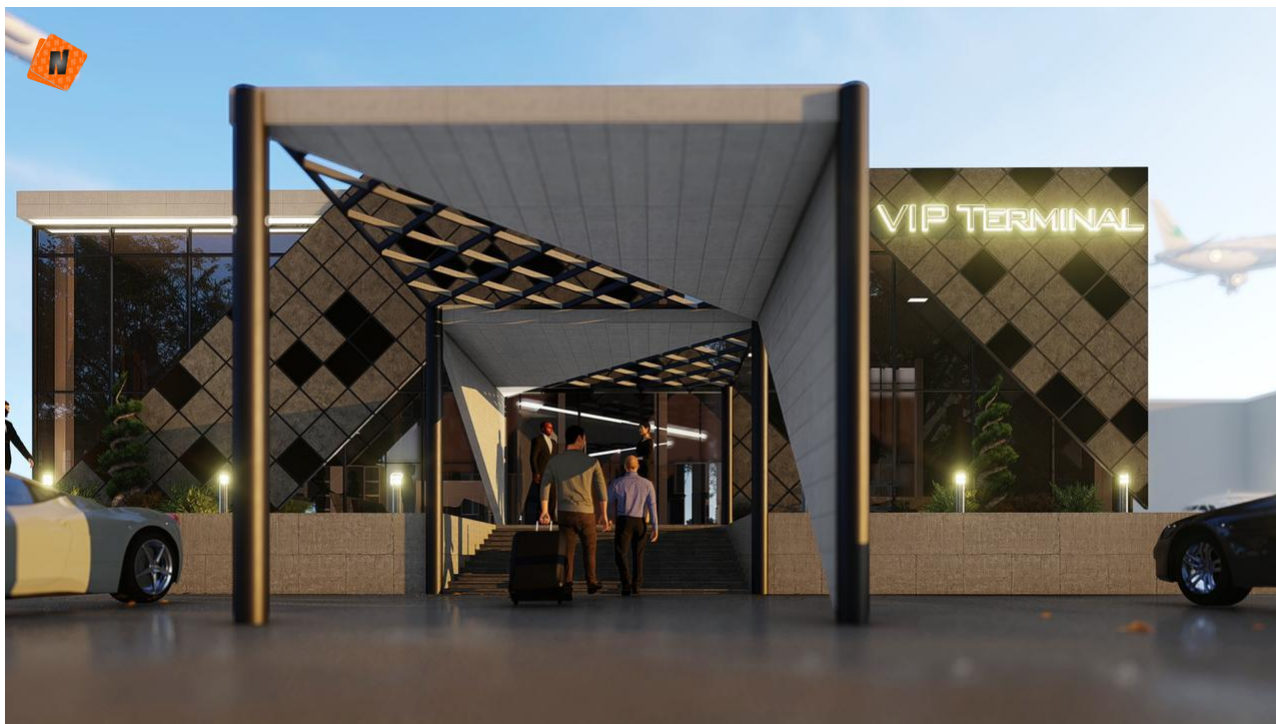


# PROJECTS

VIP TERMINAL AIRPORT BAGHDAD



NUR ARCH



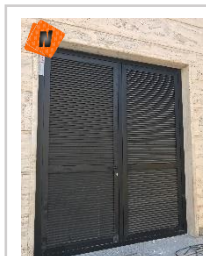
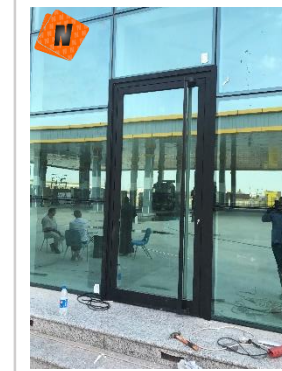
[WWW.NURARCH.COM](http://WWW.NURARCH.COM)





# PROJECTS

SAMA BAGHDAD OIL STATION







# PROJECTS

CREATIVITY



NUR ARCH



[WWW.NURARCH.COM](http://WWW.NURARCH.COM)



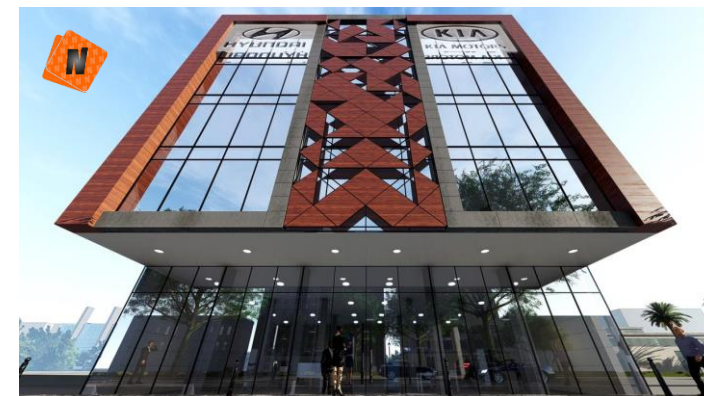


# PROJECTS

CREATIVITY



NUR ARCH



[WWW.NURARCH.COM](http://WWW.NURARCH.COM)





# PROJECTS

CREATIVITY

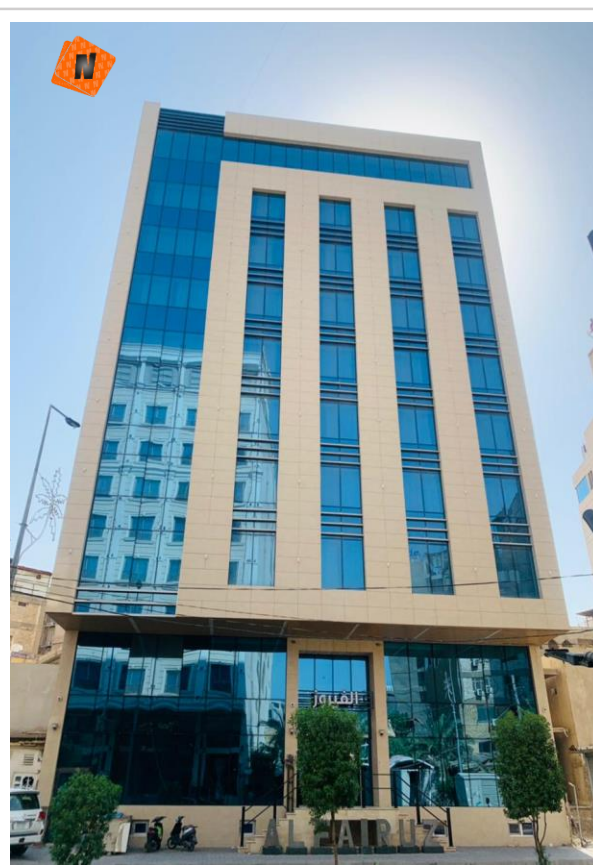


NUR ARCH



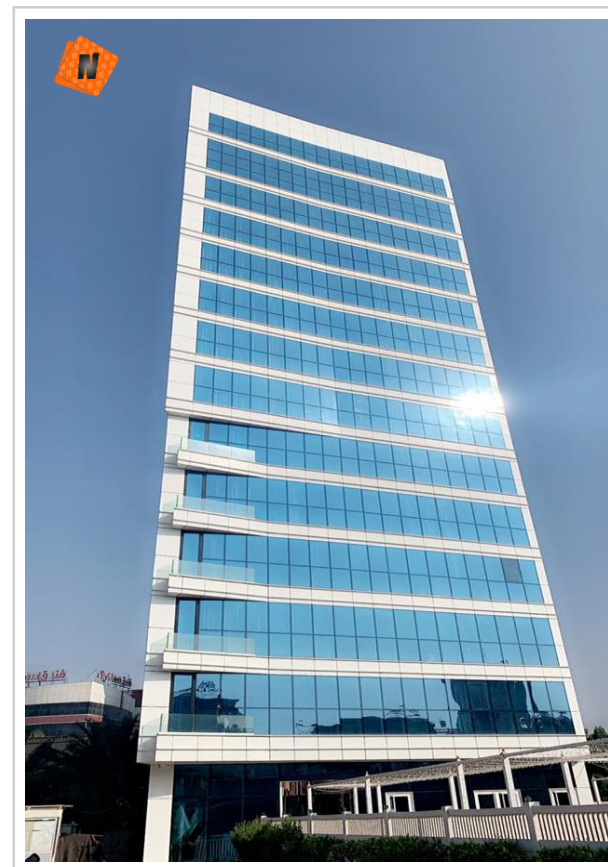
AL SAJI AUTO PART

- CURTAIN WALL
- PORCELAIN CLADDING
- IRAQ



AL FAYROZ HOTEL

- CURTAIN WALL
- PORCELAIN CLADDING
- IRAQ



AL EMARA PLAZA HOTEL

- CURTAIN WALL
- ALCOBOND CLADDING
- IRAQ

WWW.NURARCH.COM







# PROJECTS

CASE STUDY



NUR ARCH



**ALSEYDEYA TRADING**

- CURTAIN WALL
- PORCELAIN CLADDING
- IRAQ



**FOOD LAND**

- CURTAIN WALL
- FRONTEK CLADDING
- IRAQ





# PROJECTS

CREATIVITY







# PROJECTS

CREATIVITY







# PROJECTS

CREATIVITY



NUR ARCH



[WWW.NURARCH.COM](http://WWW.NURARCH.COM)





# PROJECTS

CREATIVITY



NUR ARCH



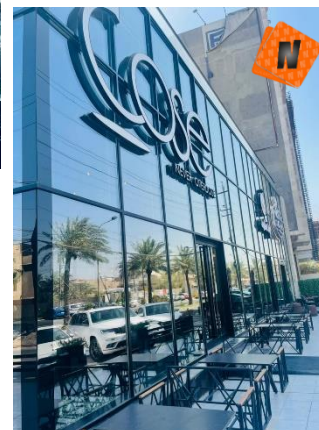
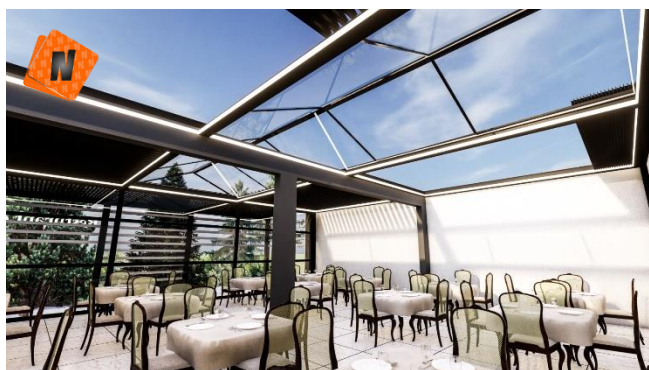
[WWW.NURARCH.COM](http://WWW.NURARCH.COM)





# PROJECTS

CREATIVITY

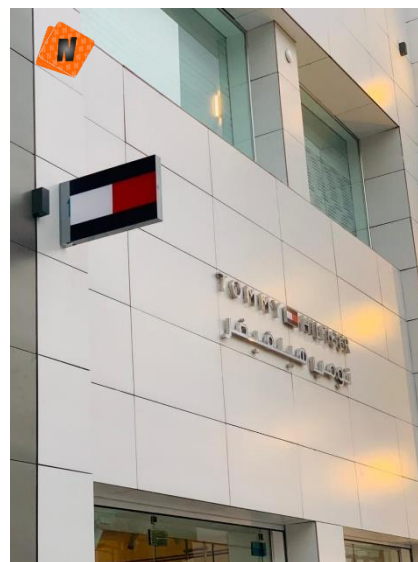
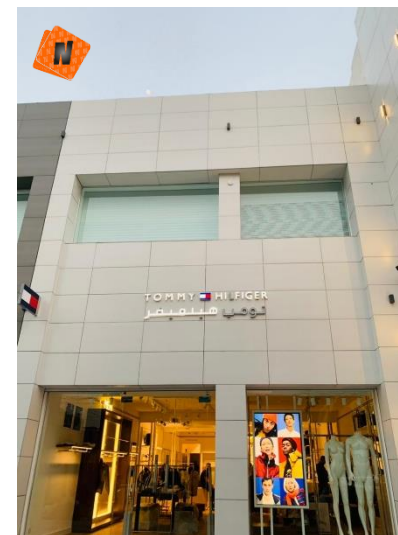






# PROJECTS

CREATIVITY







# PROJECTS

CREATIVITY







# PROJECTS

CREATIVITY

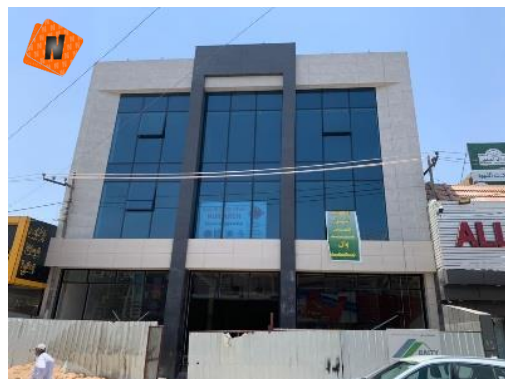
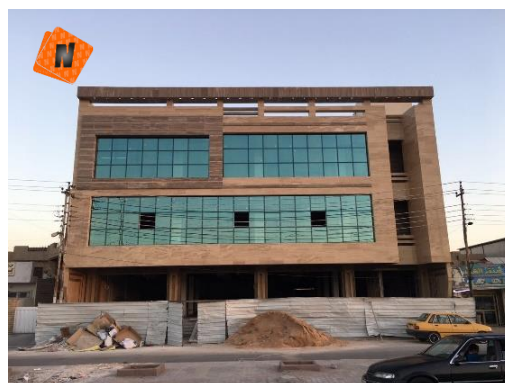
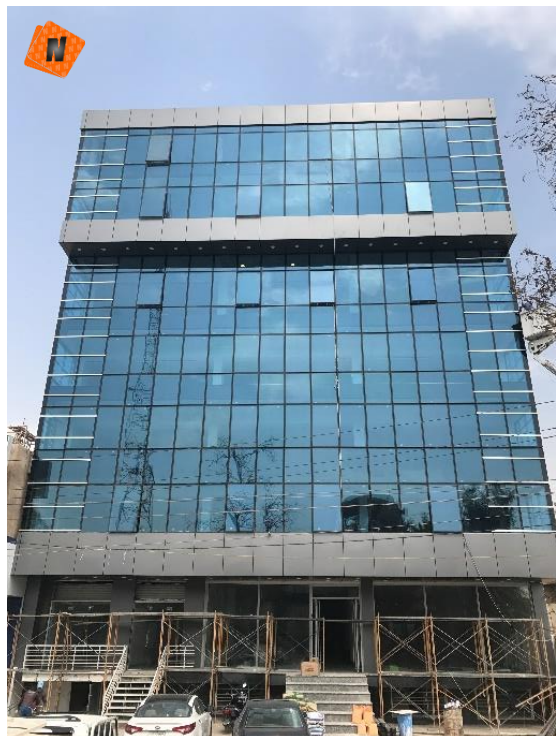






# PROJECTS

CREATIVITY

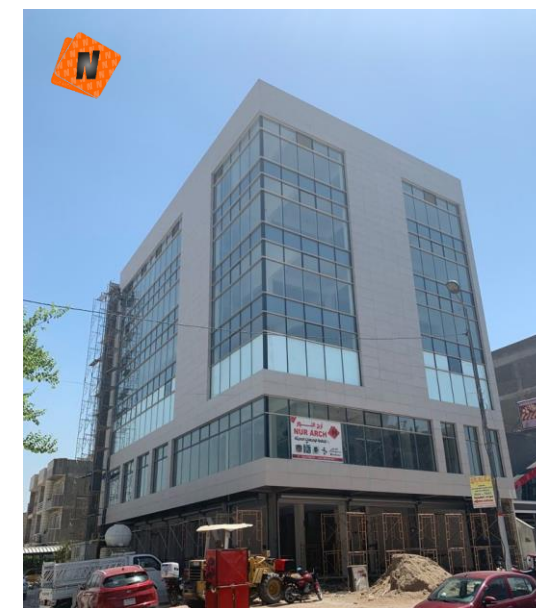
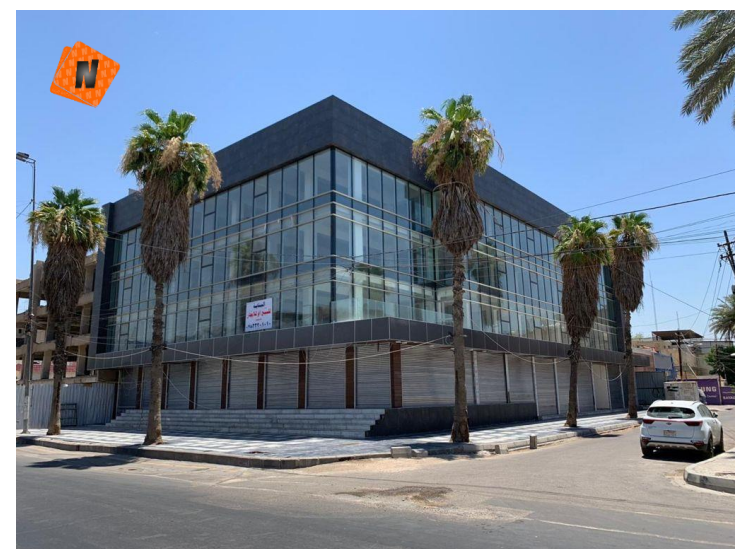






# PROJECTS

CREATIVITY







# SUSTAINABILITY

HELPING TO BUILD A GREENER WORLD



NUR ARCH

The environment, and our impact on it, is of vital importance to us all. At nur arch we use our values to build financial success and meet our social responsibilities together.

01

## SUSTAINABLE BUILDING MATERIAL

Aluminium is one of the best materials available in terms of sustainability. Aside from its practical and energy-saving advantages in construction, it can be recycled repeatedly.

02

## DESIGN

We are designing exteriors in line with the environment surrounding the project.

03

## INSTALLATION

We do installation work as high as possible in order to get the highest level of safety as well as good work.





# WE ARE

CONTACT US

“

EXPERTISE  
TO HELP  
FULFILL  
YOUR VISION  
AS INTENDED



[WWW.NURARCH.COM](http://WWW.NURARCH.COM)



[INFO@NURARCH.COM](mailto:INFO@NURARCH.COM)



nur arch



nur arch



TURKYA – ISTANBUL - TURGUT OZEL MAH. 68 SK. NO: 28 – IC KAPI 15-16



TURKEY : 0090 539 772 90 77



IRAQ – BAGHDAD - ALMANSOR – AMERAT ST- AMAAL BILD.FIRST FLOOR



IRAQ : 00964 7709 68 11 35

“

